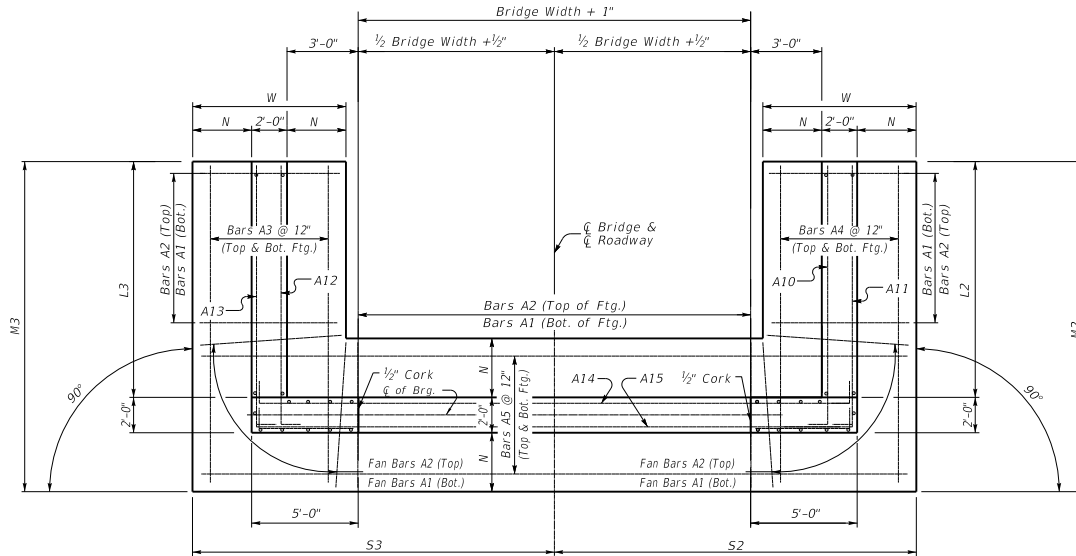


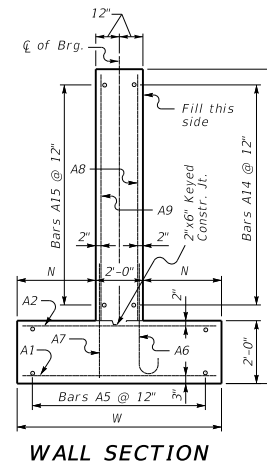
0° SKEW VARIABLE BRIDGE WIDTH 2:1 FILL SLOPES WINGS PARALLEL TO ROADWAY

ABUTMENT SKEW CORRECTION FACTOR (SCF) = 1.000

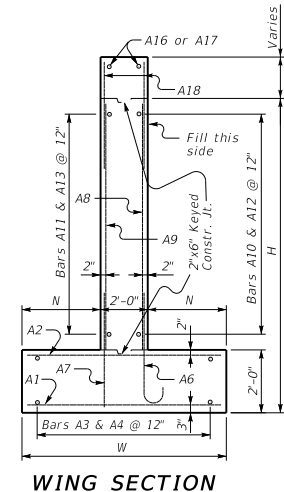


PLAN

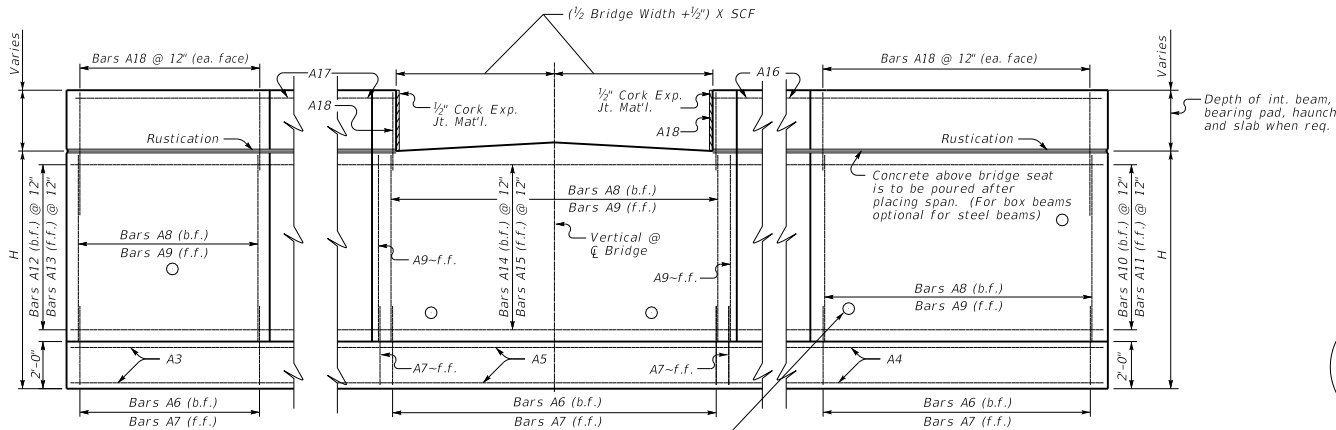
NOTE: Trim A16 & A17 bars if necessary



WALL SECTION



WING SECTION

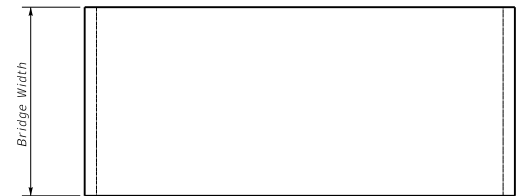


ELEVATION

Place 4" weep hole drains at 8'-0" centers at such elevation as to afford best drainage of backfill, in accordance with the Standard Specifications.



**RUSTICATION
GROOVE**



PLAN OF SUPERSTRUCTURE SLAB

KENTUCKY
DEPARTMENT OF HIGHWAYS
0° SKEW VARIABLE
WIDTH ABUTMENT
PARALLEL WINGS

STANDARD DRAWING NO. BSA-041
SUBMITTED BY *[Signature]* DATE 02-26-20
APPROVED BY *[Signature]* DATE 02-26-20
STATE ENGINEER